

WATER SYSTEM

8



The water system in your Airstream trailer provides full service, both when city water is available and when the trailer is operated completely self-contained.

When you wish to operate your water system from a city water service, connect a hose to the water inlet fitting located under the rear roadside corner of the trailer just forward of the bumper. Since the system is completely automatic, nothing else needs to be done before you utilize the entire water system, except to turn the water pump "Off." This water pump switch is located on the CENTRAL CONTROL panel in the front roof locker.

If the water system has previously been drained, it will be necessary for you to force the air from the water heater before lighting the water heater. Open a hot water faucet and allow all of the air to be forced out of the water heater. The water heater capacity is 10 US gallons. If you plan to remain for some time where city water is available, drain the water storage tank and refill with fresh water before departing. Your system has check valves in the water lines to protect the water tank, therefore, it will not fill while you are connected to city water. To fill the water tank when the trailer is connected to city water, merely open the crossover valve and remove the filler cap from the water tank. **NOTE:** This valve must be kept closed unless you wish to fill your water tank from city water source. Your water system will not operate on self-containment with this valve open. While filling the tank through the crossover valve, removal of the filler cap will prevent the water tank from being pressurized from the city water pressure, which could rupture the tank. In models with standard pull-out front lounge, this valve is located adjacent to water pump. In models with Safari twin lounges, the valve is located under the access

panel in the front roadside corner of the trailer.

If city water is not available, or will not be available at your destination, the Airstream self-contained water system may be used. The lightweight polyethylene water tank stores 30 gallons of clean fresh water for all your needs. The Airstream pressure-demand water pump (must be turned on at CENTRAL CONTROL panel) runs whenever a faucet is open and shuts off almost immediately when the faucet is closed; silently delivering 3 gallons per minute under constant pressure. To fill the water storage tank, remove the filler cap and fill with a water hose or bucket, or through the city-water crossover valve as described earlier. The tank may be filled until the water entry pipe is overflowing. Replace the cap . . . the water system is now ready for use. Remember, if you have been hooked up to city water your tank will not have been filled, unless the crossover valve has been opened, so be sure to fill it before leaving.

To give complete access to the pump and the water screen, pull out the lounge, remove the filler mattress and (safari lounge only) lift off the loose plywood cover on the left hand side of the lounge.

NOTE: Before leaving your Airstream unattended for any length of time, it is advisable to turn off the water pump. (The switch is located on CENTRAL CONTROL panel.)

The water screen mentioned above should be cleaned periodically to prevent accumulation of dirt, sand, etc. The screen is located under the front lounge next to the pump. To remove it, disconnect the rubber hoses from both ends, separate the screen housing, and lift the screen out of the compartment.

WATER SYSTEM



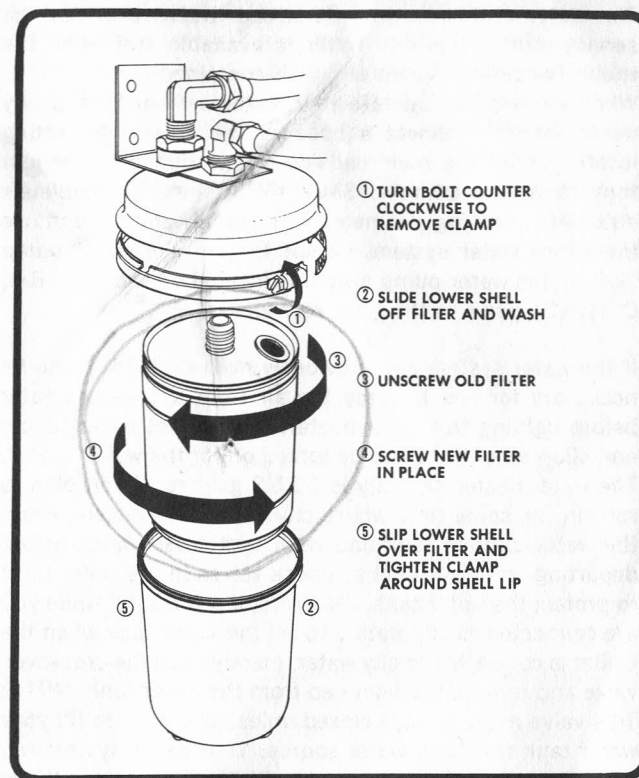
Due to iron and lime deposits which are found in various parts of the country, it is advisable to clean the tank occasionally. Pour some bicarbonate of soda into the filler pipe with several gallons of water and allow to stand for several hours. Flush out by opening the drain valve and running cold water through the tank.

WATER PURIFIER (standard on International models).

Among many fine accessories for your Airstream is the Everpure EN-1 Water Purifier. This is located under the galley sink. It is designed to remove all dirt and colloidal matter and to eliminate all tastes and odors of chlorine, phenol and similar products, delivering a sparkling, taste-free water ideal for drinking, cooking, coffee, tea, ice cubes and carbonated water.

The purifier, by itself, is **NOT** guaranteed to remove tastes and odors or iron and sulphur, although in certain cases it does so. The best known method for removing sulphur tastes is chlorination of the water supply. This, of course, adds its own taste to the water, but the purifier will completely remove the chlorine after it has done its job. Super-chlorination will also precipitate dissolved iron which the purifier will then remove.

The quality of the water never varies. At the end of the filter pack life the quality of the water is just as perfect as when it started. The flow rate is all that changes. As the filter pack is used, the minute pores slowly fill up and the flow rate gradually decreases. When the rate reaches a point where it is no longer convenient for use, it is time for replacing the filter pack. These are available from your dealer or Wally Byam Stores. Instructions for changing the pack are in each box. It is a good idea to order packs two



at a time so that you will always have a spare on hand. Your Airstream is equipped with a water pressure regulator which is located adjacent to the water inlet in the one-stop service center. This is an exclusive feature which protects the plumbing inside your Airstream from possible excessive pressures which may be encountered in some

city water systems. The water pressure regulator insures that regardless of variation in the city water pressure, the water pressure at the faucets in your Airstream will always remain constant. If it should ever become necessary to adjust the water pressure regulator there is a screw adjustment located on the dome. Turning this screw clockwise increases pressure, counter clockwise decreases pressure.

WATER SYSTEM TROUBLE SHOOTING.

TROUBLE — PUMP DOES NOT PRIME.

- a. Be sure there is water in the tank.
- b. Make certain battery power has not been exhausted.
- c. Make certain crossover filler valve is turned off and there is no air leak between the tank and the pump.
- d. Check valve assemblies to make certain no foreign matter is between the valve and valve seat causing loss of suction. This is done as follows:
 1. Remove four slotted head screws.
 2. Lift motor, drive and diaphragm assembly off base.
 3. Lift valve assemblies from pockets and clean all foreign matter from valve and valve seat.
 4. Replace valve assemblies back in the same pockets, being sure rubber valve is in UP on INTAKE SIDE and DOWN on EXHAUST SIDE.
 5. Replace top assembly and bolt back together, being careful to tighten evenly.

TROUBLE — PRESSURE DROPS AND PUMP KICKS ON PERIODICALLY WHEN WATER IS NOT BEING DRAWN.

- a. Check all connections and faucets for leaks. One drop of water per minute will cause pump to run every two hours.
- b. Same as d. above.

TROUBLE — PUMP OPERATION IS ROUGH AND MAKES EXCESSIVE NOISE.

- a. After several months of operation, under certain conditions, the flow of the pump may become rough. If this happens the flow may be smoothed out again as follows: Turn pump off. Remove BOTH inlet and outlet hoses from pump, place rags or sponges under both ports and turn on pump. Let pump run until all water is expelled from pump.

TROUBLE — EXCESSIVE BELT WEAR

- a. Adjust belt for proper tension. Belt has proper tension if it can be moved in and out on one side a total of $\frac{1}{4}$ " at a point half way between pulleys. To adjust belt: Loosen nuts on end of motor and slide motor up or down until desired tension is attained, then retighten nuts.

TROUBLE — PUMP RUNS FREQUENTLY OR CONSTANTLY AND THERE IS NO LEAK IN THE PRESSURE SIDE.

- a. Make sure crossover valve is turned off.
- b. Check for an air leak on the suction side of the pump (between the tank and the pump). This will not damage the pump but will run the battery down.

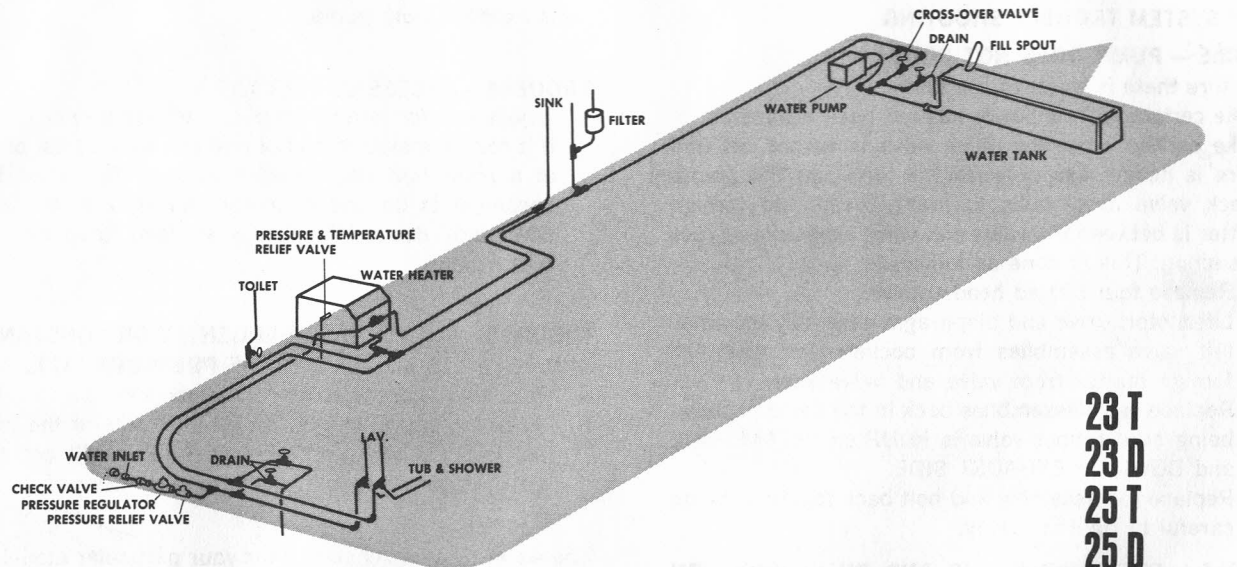
The water system schematic for your particular model Airstream is illustrated on one of the following pages. We suggest that you cross out the schematics which do not apply to your Airstream to insure future reference to the proper schematic.

For water system capacities, refer to chapter 15.

trouble shooting

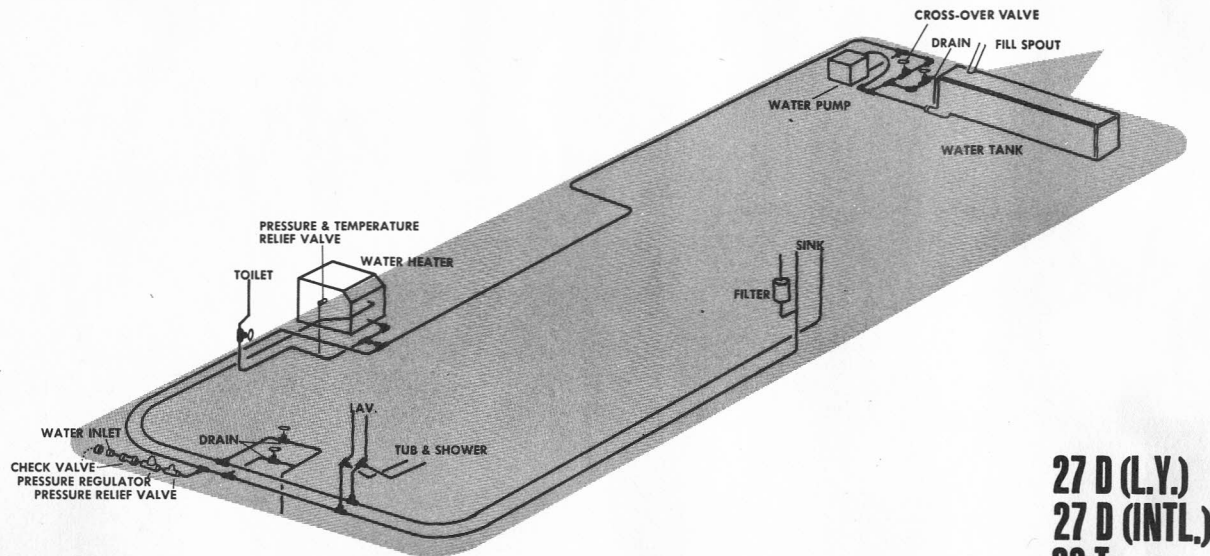
WATER SYSTEM





NO

23 T
23 D
25 T
25 D
27 T (L.Y.)
27 T (INTL.)



This

27 D (L.V.)
27 D (INTL.)
29 T
29 D
31 T
31 D

1944 JAN 7

1944 JAN 7

1944 JAN 7
1944 JAN 7
1944 JAN 7
1944 JAN 7
1944 JAN 7

